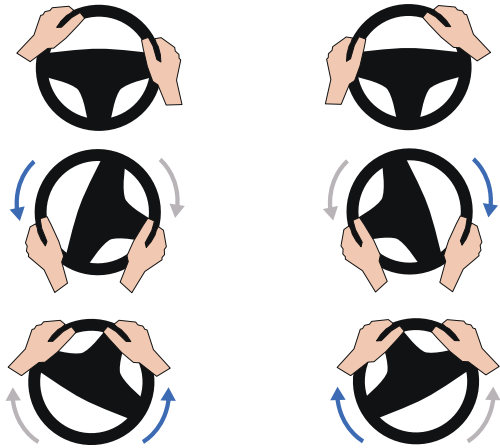
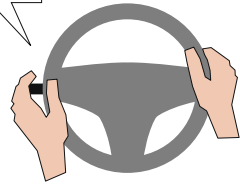
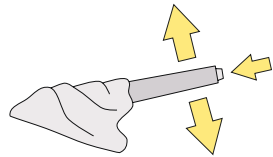


Hand Controls

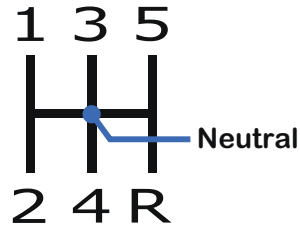
Using 'Pull-Push' steering gives good control in most normal situations



Use fingertip control when operating the indicators



Use your palm to gently and smoothly operate the gear lever



Moving Off

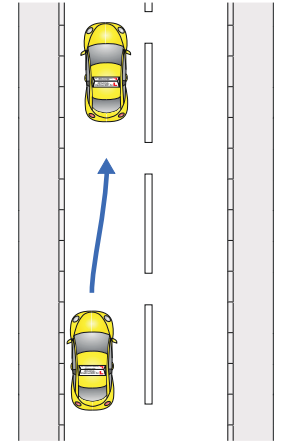
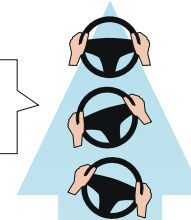
MOVE

Gently steer into a safe driving position

Keep your feet still

Fully lower the handbrake

Keep your feet still

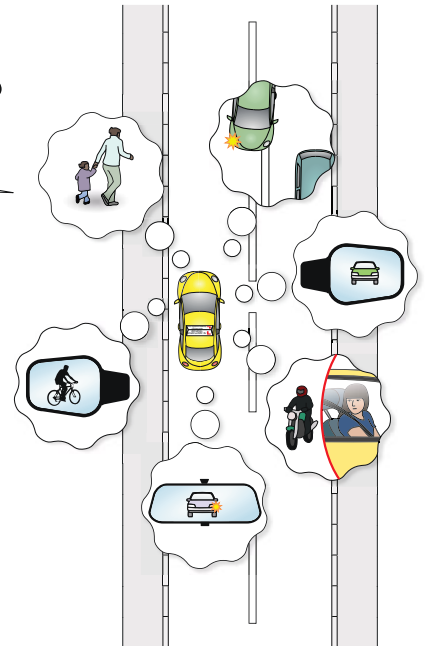
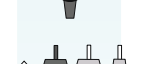


OBERVE

Consider whether another road user would benefit from a signal

Make effective observations including your 'blind spots'

Keep your feet still



PREPARE

Find the biting point

Set the gas

1st gear

Clutch down

