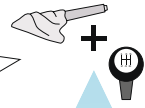


Stopping

Apply the handbrake and change into neutral to secure the car



LOOK

Make sure your position is safe, legal and convenient



SPEED

Brake progressively. Press the clutch pedal all the way down just before the car comes to a stop



POSITION

Steer gently into a parked position



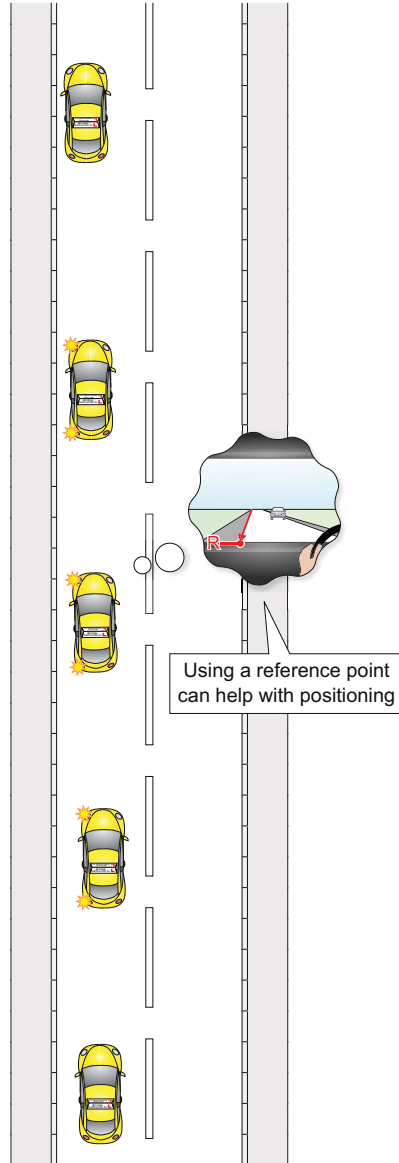
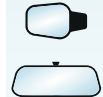
SIGNAL

Consider whether another road user would benefit from a signal



MIRRORS

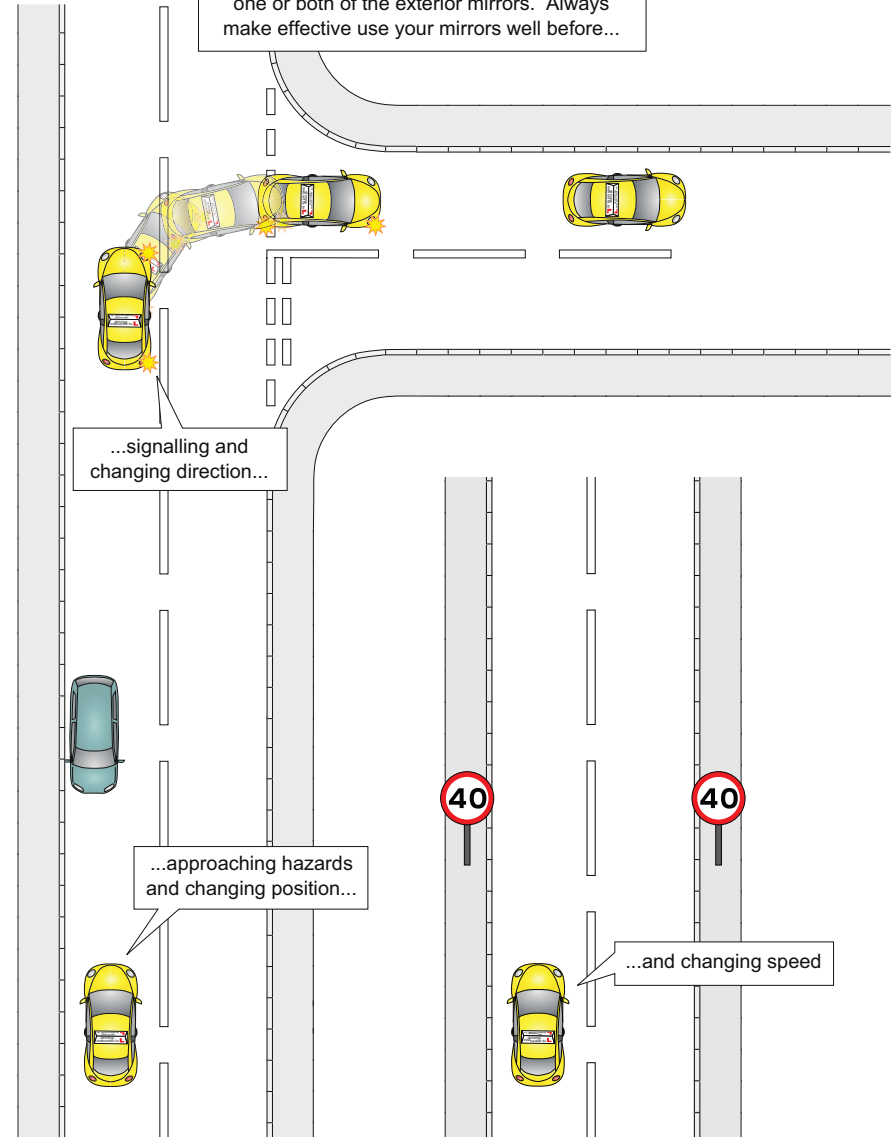
Use your mirrors to make sure you can stop safely



Using a reference point can help with positioning

Mirrors

Normally use the interior mirror first, followed by one or both of the exterior mirrors. Always make effective use of your mirrors well before...



...signalling and changing direction...

...approaching hazards and changing position...

...and changing speed